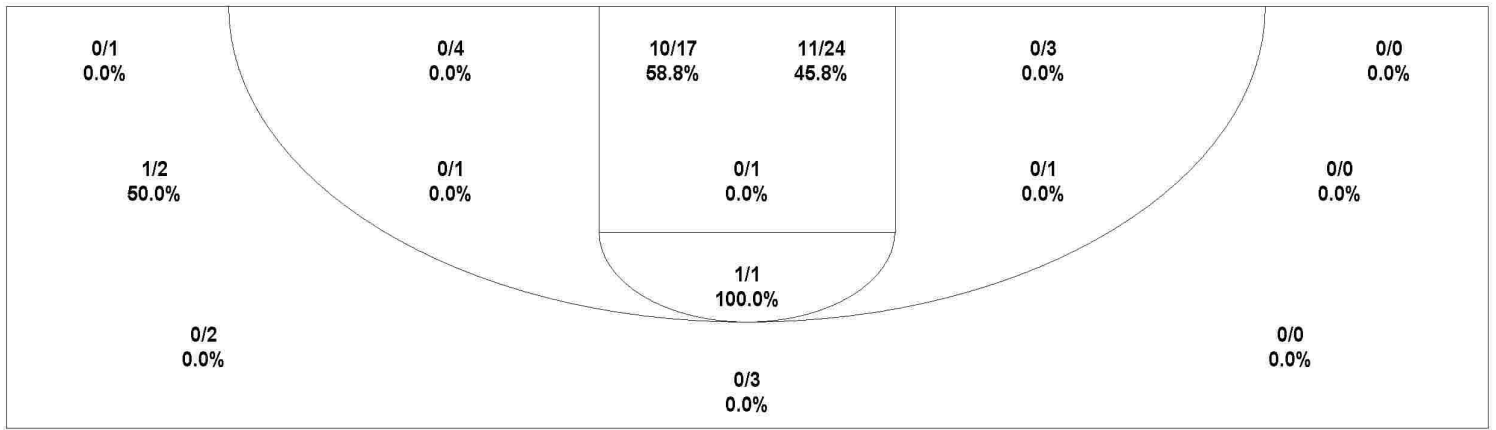
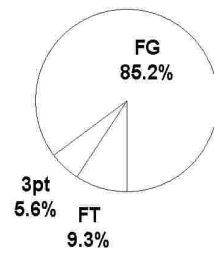


2005 AHSAA State Basketball Championships - TEAM SHOT CHART for the Mars Hill Panthers
Calera Eagles vs. Mars Hill Panthers
DATE: 03/01/2005 TIME: 12:00 SITE: BJCC

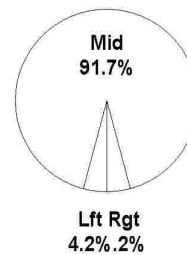


| Shot Summary | M/A | % | PTS |
|------------------|-------|--------|-----|
| 3Pt FG | 1/8 | 12.5% | 3 |
| 2Pt FG | 23/53 | 43.4% | 46 |
| Layups - L | 0/0 | 0.0% | 0 |
| Layups - R | 1/1 | 100.0% | 2 |
| Dunks | 0/0 | 0.0% | 0 |
| Putbacks | 0/0 | 0.0% | 0 |
| Overall Shooting | 24/61 | 39.3% | 49 |
| Free Throws | 5/7 | 71.4% | 5 |
| Total Points | | | 54 |

Scoring Distribution

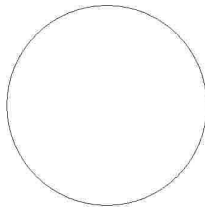


Scoring Locations



| By Period | FG | FGA | FG% | 3Pt | 3PA | 3P% | FT | FTA | FT% | PTS | ORB | DRB | TR | PF | AST | TO | BS | ST | P/S |
|------------|----|-----|------|-----|-----|------|----|-----|------|-----|-----|-----|----|----|-----|----|----|----|------|
| 1st Period | 5 | 17 | 29.4 | 0 | 1 | 0.00 | 0 | 0 | 0.00 | 10 | 3 | 5 | 8 | 2 | 2 | 5 | 2 | 2 | 0.59 |
| 2nd Period | 4 | 15 | 26.7 | 0 | 5 | 0.00 | 0 | 0 | 0.00 | 8 | 4 | 10 | 14 | 3 | 1 | 5 | 1 | 4 | 0.53 |
| 3rd Period | 7 | 16 | 43.8 | 1 | 2 | 50.0 | 1 | 1 | 100 | 16 | 4 | 6 | 10 | 5 | 3 | 5 | 0 | 2 | 1.00 |
| 4th Period | 8 | 13 | 61.5 | 0 | 0 | 0.00 | 4 | 6 | 66.7 | 20 | 3 | 9 | 12 | 4 | 3 | 6 | 0 | 1 | 1.25 |
| Game | 24 | 61 | 39.3 | 1 | 8 | 12.5 | 5 | 7 | 71.4 | 54 | 14 | 30 | 44 | 14 | 9 | 21 | 3 | 9 | 0.84 |

Scoring Breakdown



Scoring Range

